



DON QUIXOTE

Don Quixote
2811 E. Olympic Blvd
Los Angeles, CA 90023

323-268-6339
alex@donquixote.la
donquixote.la

STAGE

DIMENSIONS

L: 24' x 1", W: 16', H: 2' x 8"

STAGE RACK

DiGiCo X-D2-AN-M D2

RackMADI



AUDIO CONSOLES

DiGiCo S31 FOH

DiGiCo S21 MOH





SOUND

MAIN PA

2x L-Acoustics A-15 Wide
4x L-Acoustics A-15 Focus
4x L-Acoustics KS-21 Subs
AMPS: 3x LA4X

REAR FILL

4x L-Acoustics KIVA II
2x L-Acoustics KS28
AMPS: 2x LA4X
1x LA12X

BALCONY FILL

6x L-Acoustics 5XT-2 (around horseshoe)
2x L-Acoustics SB18m
AMPS: 1x LA4X

MONITOR

8x L-Acoustics X12 wedges
AMPS: 2x LA4X





LIGHTING & VIDEO

LIGHTING

4x Wildsun 500

12x Ayrton Sharpy

16x Sceptron LED Bards

1x Avolites Quartz Titan

1x Avolites Titan Mobile Wing

(21) COLORado Batan 72X

(6) Clay Paky Volero Wave

VIDEO WALL

Artfox XPO P2.5

Novastar VX4U Controller

Resolution: 2048x576





DJ & MICS

DJ EQUIPMENT

2x Pioneer CDJ Nexus 2
1x Pioneer Mixer Nexus 2
3x Pioneer CDJ 3000

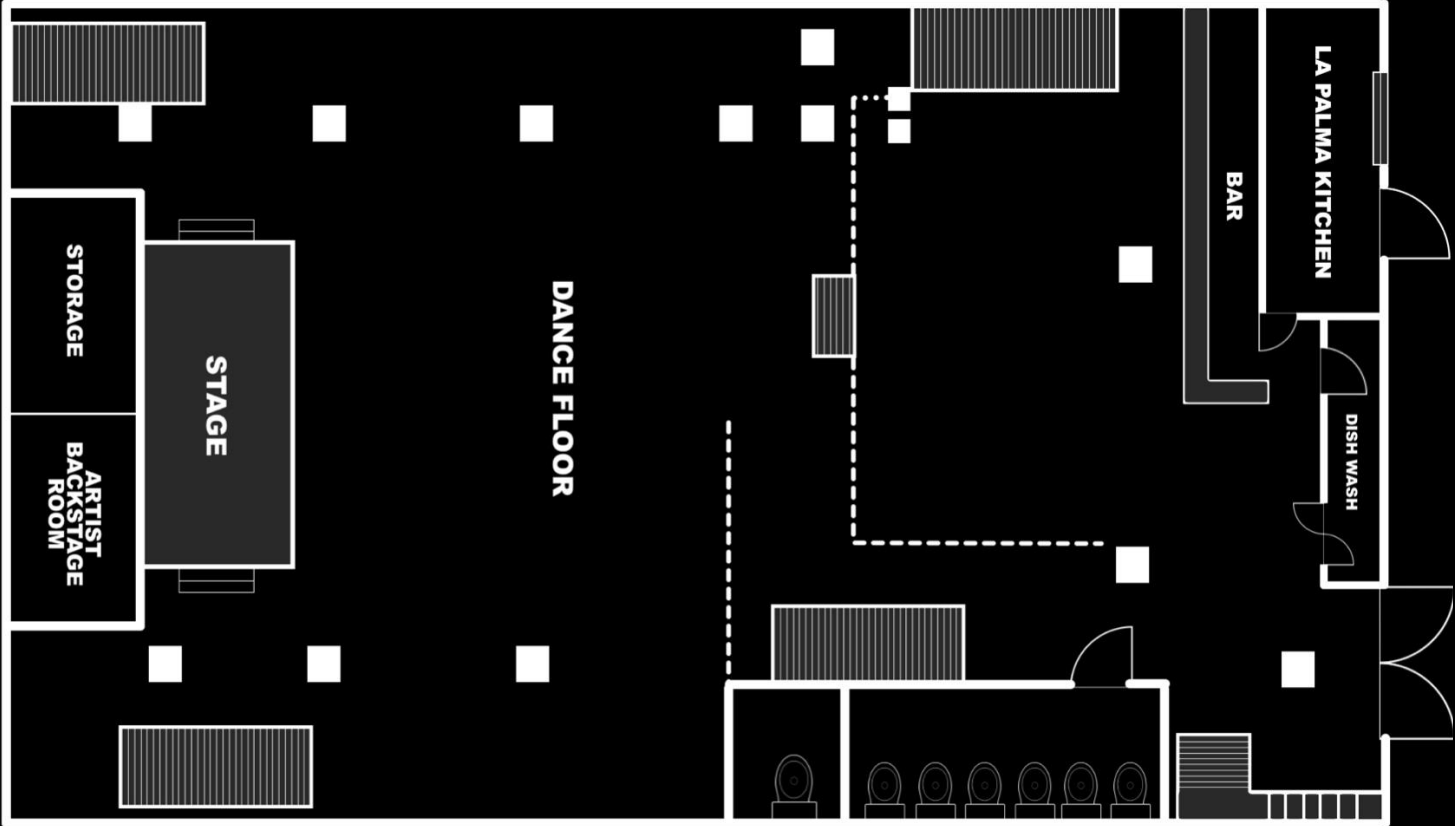
MICROPHONES

6x Shure SM58
6x Shure SM57
3x Shure PG58 (wireless)
1x Shure Beta 52
2x Shure SM81
3x Radial Stereo DI
1x MONO DI
3x Sennheiser 604
2x Sennheiser SLXD

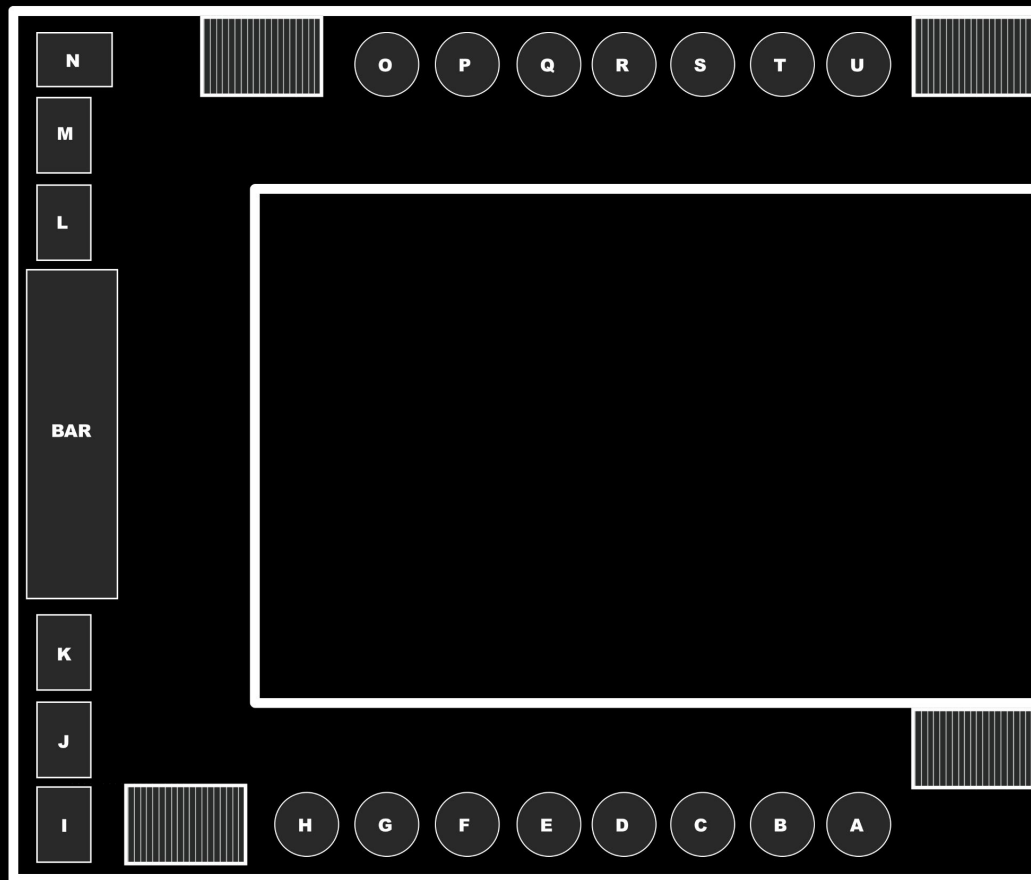


FLOOR PLAN - GROUND FLOOR

■ : PILLARS
- - - : RAILS



FLOOR PLAN - UPSTAIRS LOUNGE





CONTACT

General Inquiries By Email:

alex@donquixote.la

Booking Inquiries:

alex@donquixote.la

Sound/Lighting/Production Inquiries:

production@donquixote.la

Marketing:

adrian@catch.one



A vibrant nightclub scene with blue laser lights and a disco ball. The text "DON QUIXOTE" is overlaid in the center in a bold, blue, outlined font. The background shows a crowd of people dancing and socializing in a dimly lit room with a balcony level.

DON QUIXOTE